



# CRUZIANA

GEOPARK NATURTEJO DA MESETA MERIDIONAL-EUROPEAN AND GLOBAL GEOPARK - MONTHLY REPORT

**In this issue:** – 100 months in the Global Geoparks Network! –The PROVERE and the Low Density Territories in the Center Region - Project Lands of Gold wins national museology prize – Out of Place – Christmas Music and Traditions in Oledo – ...and more!



Olá/Hola/Ciao/Bonjour/Γειά σου/Hallo/God Dag/Salut/Zdravo/Hello/Ahoj/Helo/Helló/ Hei

## **Geo-histories of our places and people: Oleiros**

“It's a path of great loneliness: those are dozens of kilometres without a single soul, mountains and more mountains, how big can our small country be.”

José Saramago (Journey to Portugal)

Those who travel by the connection of IC8 motorway to Oleiros, from Sertã or, mainly, from Proença-a-Nova, feel that mountain behind mountain keep rising themselves, in a land-based fury, until it reaches the backwater of Oleiros. The village is located in a great and pleasant valley in the axis of the river that crosses it, between the Red Mountain by north, and the imposing Cabeço Rainha, by south. Here is located the second highest mountain of the Geopark, exceeding 1080 m. The slopes of these orographic “waves” have shades of pine and pink heather. They result from the tectonic “storm” created by the collision with the African plate, exacerbating itself in the Iberian Central Range, in the last millions of years. Here, everything runs from northeast to southwest: the mountains and rocks, the water sources and the public roads.

The granitic porphyry that occurs, highly weathered, in the road to Álvaro, report the proximity of a granitic solid, in depth or eroded in a long time ago. Related to it, is developed a vein that crosses the Cavalo Stream which, once, was explored in the main local wolfram mines. The galleries drill through the cliffs, regularly placed, one over upon, across the naked slope through soils unusually acids, where the native vegetation has difficulty in imposing themselves. Shared with the neighbour Parish of Mosteiro, presently in study on the scope of a master degree's thesis from the University of Coimbra, the Mines of Fragas do Cavalo are some significant Mining Heritage, relatively well preserved but with an urgent need of intervention, bearing in mind a future Cultural Trail linked with the Second World War in Portugal.

In this basin of Oleiros, the living and the dead mark their presence from many millennia. In the summit of Cavalo, a white quartzite tumulus would be a votive landmark in a rude landscape. The passage, and the signature of those who passed there, can be seen in the podomorph rock art, with manifestly masculine characteristics, next to the unassuming path that may have the memory of thousands of years, next to the new Cristo-Rei viewpoint. Both are evidences of the Chalcolithic, both signalled the passage of the living and life of this region. Another strange testimony of the Human time is the Cova da Moura. Nearly in the heights of Cabeço Rainha comes up this pit dug out in the schist, possibly by the Romans as the findings seem to certify, with 30m in the biggest axis, 5m of depth and unknown purpose, possibly for mining.

The historical past of Oleiros takes us to the Hospitallers and their first autonomy charter given to Oleiros, dated from 1232. This Commendation of the Order of Malta, one of the 12 villages of the Priory of Crato, would have a new charter by D. Manuel I, in 1514. During the Fantastic Wars, Oleiros have suffered losses and damages due to the passage of the French-Spanish army in 1762 and during the 3rd French invasion, in 1811, which led to the occupation and looting of the village, with the population fleeing to the mountains.



**Olá/Hola/Ciao/Bonjour/Γειά σου/Hallo/God Dag/Salut/Zdravo/Hello/Ahoj/Helo/Helló/ Hei**

Oleiros saw here the birth of great personalities of the Portuguese history. Emphasis to D. Fr. Jorge Themudo, first Bishop of Cochim and Archbishop of Goa in the far India, in 1557 until his death, in 1571; D. João d'Amaral e Pimentel, Bishop of Angra do Heroísmo, a personality dedicated to the arts and literature, responsible for the origin of the oldest continuous periodic publication in Azores and for the monographic reference of Oleiros, dated from 1881. But the major reference of Oleiros is indeed Father António de Andrade. Born in the village in 1580, in a house that still exists nowadays, soon departed to India, where he was Rector of the College of S. Paulo, in Goa. Father António de Andrade led a small expedition that took him to Tibet, in 1624. The journey that he undertook would take him from Agra to [Chaparangué](#), in Tibet, passing by Delhi, Srinagar, Badrinath, Mana and climbing the passage of Mana. For his safety he brought an astrolabe and a sun compass which afterwards allowed him to refer that Chaparangué was located 31°29' north. During this journey – that lasted around three months – he found, yet, many difficulties; he stayed, afterwards, close to a month in Tibet, more precisely 23 days, and came back after spending those months to reach, once again, to Agra. The report of the first European contact with Tibet had enormous impact in the Europe of those days, being its letters translated in five different languages. Nowadays, exists a proposed project for the culture appreciation of Father Padre António de Andrade legacy, his contribute for the globalization of the intercultural dialogue, known as the Mountain Museum of Oleiros. This museum will be decisive for the construction of a cultural project that appreciates Oleiros, its heritage and its reference products of national value, boosting the development of the multidisciplinary international cooperation.

The pleasantness of this green valley is remarkable by the 120 places that form this parish, distributed in 119,39km<sup>2</sup>. Many are the areas and places for so sparse population, a total of 2306 inhabitants, given that more than a half are located in the village. Land of the four hills topped by many other chapels, are the three yards that converge the social life: the Churchyard Square, the Devesa Square, and, of course, the Town Square, verdant where could not be completed without its romantic bandstand. It is worth to walk these streets between sober architectures, but with details that aggrandize the schist. Here, a delicious dairy offers the best fresh-cheese of the entire region, besides a simple and nice restaurant, but where it can be found one of the most singular gastronomic references of all the Geopark: the Roasted Kid. This is the privileged stage of the cultural promotion of Oleiros towards the region and the country. The Pinewood Fair is a major reference in the local economic activities promotion. The Renaissance Fair, hosted by the Father António de Andrade School, due to its characteristics is innovative in Portugal and has conditions for a sustainable expansion and national notoriety. The Roasted Kid Festival, during the Spring, and the Strawberry Tree and Chestnut Festivals, during the Fall, are nowadays milestones in the disclosure of the local products quality and originality.





**Olá/Hola/Ciao/Bonjour/Γειά σου/Hallo/God Dag/Salut/Zdravo/Hello/Ahoj/Helo/Helló/ Hei**

One cannot expect to find here architectonic heritage of great significance. However, deserves to be pointed two protected buildings of national relevance. The Church of Mercy, rebuilt in 1714, where excels the baroque style of the main chapel, and the Mother Church, initiated in the 16th century, with three separated naves by Corinthian columns, from what is told brought from the medieval Maltese monastery that could existed in Mosteiro, possibly already reused from the Romans or Visigoths; the naves are covered by a beautiful ceiling of painted caissons with Biblical scenes, and the altar front shows Hispanic-Arabic tiles.

“This population greatest wealth is in the riversides that stay in the foothill”. In the classic Portugal Guide, is in this way described the river that crosses Oleiros: “It’s a delicious walk, only for the charms of the nature, without any help of art, follow those banks in one or another side of the river and in some places in both of them, in the length of 3 kilometres, from Moinhos da Lameira to the river mouth of Ribeiro do Peso.” Here we find nowadays the excellent Santa Margarida Hotel and the leisure complex of Açude Pinto. More in the upstream, in the place of Dão can be found the “caluas” that originate the singular Callum wine, an anthropological treasure, close to be recognized. An urban and hiking trail that unites all these points of interest alongside the stream will be of great importance for the touristic appreciation of a pleasant natural space surrounded by the traditional cornfields. This trail will discover the medieval tradition of the Callum, the soils usage and the winemaking production techniques, as well as the traditional private wine cellars where the visitor is always warmly welcome.

## References

Caninas, J.C., Henriques, F., Batata, C. & Batista, A. 2004. Novos dados sobre a Pré-História Recente da Beira Interior Sul. Megalitismo e Arte Rupestre no concelho de Oleiros. Estudos de Castelo Branco, 3, 3-30.

Caninas, J.C., Sabrosa, A., Henriques, F., Monteiro, J.L., Carvalho, E., Batista, A., Chambino, M., Henriques, F.R., Monteiro, M., Canha, A., Carvalho, L. & Germano, A. 2008. Tombs and rock carvings in the Serra Vermelha and Serra de Alvélos (Oleiros-Castelo Branco). In Graphical Markers and Megalith Builders in the International Tagus, Iberian Peninsula, (ed.) P. Bueno-Ramírez, R. Barroso-Bermejo & R. Balbín-Berhmann. British Archaeological Reports, BAR International, series 1765, Oxford, 89-102.

Esteves-Pereira, F. 1924. O descobrimento do Tibete pelo P. António de Andrade. Coimbra: Imprensa da Universidade.

Neto de Carvalho, C., Rodrigues, J.C. & Gonçalves, D. 2013. Património Geológico de Oleiros: inventário de geossítios e propostas para a sua valorização. Açafa On-line, 6, 4-61.



Olá/Hola/Ciao/Bonjour/Γειά σου/Hallo/God Dag/Salut/Zdravo/Hello/Ahoj/Helo/Helló/ Hei

Pimentel, J.M.P.A. 1881. Memórias da Villa de Oleiros e do seu concelho. Typographia da Virgem Immaculada, Angra do Heroísmo, 358pp.

The Editor  
Carlos Neto de Carvalho  
Scientific Coordinator  
Geologist

Front Page: (Projecto Objectiva: Geopark)

# ACTIVITIES OF THE MONTH



**December – First Participatory Business Plan of Naturtejo Geopark.** In the same month that Naturtejo Geopark celebrated 100 months of existence in the Global Geoparks Network assisted by UNESCO was created the first participatory business plan for 2015. The geopark team joined the representatives of the seven municipalities to work in an immersive action plan, catalyst for the territory interests. This action was very appreciated by the municipalities' Mayors, since it brings the Global Geoparks Network, its politics and potentialities closer to the decision and the local communities. On the other hand, this implies a stronger engagement and accountability with the Geopark project development. The actual plan is already on its way with all the participants sharing their enthusiasm!

**28 November to 13 December – Out of Place returns with 7 concerts, workshops and other activities through the villages of Idanha-a-Nova.** Galandum Galundaina, João Hasselberg, Emilio Villalba and the duo Arianna Savall and Petter Udland Johansen are some of the names of the Out of Place – International Ancient Music Festival, which promoted seven concerts with no admission fee in several spaces of the Idanha-a-Nova Municipality. This was the third edition of one of the most relevant cultural projects in the music area in this region, aiming to break with all the prejudices concerning the scenarios where fit the music and the culture. This edition begins with concerts of the Portuguese João Hasselberg in the Romanesque church of S. Pedro de Vir-a-Corça – Monsanto and the Spanish Emilio Villalba in the former Town Hall of Salvaterra do Extremo. Next are followed up by the traditional Argentinean tango “El Bocadito” in the small village of Soalheiras, in the Recreational Association “The Root”, the Spanish/Norwegian group Hirundo Maris, formed by Arianna Savall and Petter Udland Johansen in the ancient Cathedral of Idanha-a-Velha and a Rural Concert approaching the work of J.S. Bach in the Raiano Cultural Centre. In this edition there was still time for two more concerts: the traditional Portuguese music of Cardo Roxo + Silva, in the Daily Care Centre of São Miguel d’Acha and the Galandum Galundaina, who took the dancing and the language of the Miranda do Douro lands to the ancient Cathedral of Idanha-a-Velha. There were scheduled several free of charge activities, such as a photo exhibition of Valter Vinagre and Pedro Guimarães, movies, and several workshops in the CCR: construction of recycled and medieval instruments; introduction to the Tango dance and workshop of “Adufe” making (both on Saturday, 6 December); and still the making of traditional sweet cakes in Monsanto. The Out of Place Festival is produced by the Company “Arte das Musas” in partnership with the Municipality of Idanha-a-Nova and with the support of Naturtejo Geopark. The program can be consulted in [www.foradolugar.pt](http://www.foradolugar.pt).



**8 December – Protected landscape of the Gardunha Mountain with new experiences and interpretation tools**

**8 December – Protected landscape of the Gardunha Mountain with new experiences and interpretation tools.** The Gardunha Mountain introduced a new promotional image for its most recent protected area. The Gardunha trails gather 130km in 10 pedestrian trails around the mountain. In the Naturtejo Geopark territory are highlighted the Gardunha Trail and the Marateca Trail. The MTB centre of Lourical do Campo is the starting point for 250km of signalized tracks that adventure themselves in the mountain. The entire S. Vicente da Beira gathered in the former Town Hall for the introduction of the book “GeoMorphology in Gardunha”, work of the local photographer António Conceição, which celebrates in pictures the granitic forms that define the landscape of Gardunha. This book, published by the Research Centre of Gardunha counted with the support of Naturtejo Geopark.

**11 December – Lesson in the Master course of Ecotourism in the Superior Institute of Agronomy.** The disciplines of Ecotourism and Natural Resources Appreciation, in the Master course of Management and Resources Conservation, combined between the Superior Institute of Agronomy of Lisbon and the University of Évora had a different morning. Carlos Neto de Carvalho was the invited guest to discuss the appreciation of the geological resources in the scope of the geoparks under the UNESCO auspices. “The geoparks as “bottom-up” models of development and regional cooperation: Naturtejo Geopark assisted by UNESCO” was the chosen issue. During two and a half hours were discussed examples at the level of geoconservation, geological heritage interpretation and touristic development in several geoparks, as well as suitable models of organization and related management.

**12 December – Project “Lands of Gold” of Vila Velha de Ródão wins national museology prize.** The distinction for the preservation of the local memory was handed in the Pharmacy Museum, in Lisboa and earned, from the part of Luís Pereira, Mayor of Vila Velha de Ródão Municipality, a special gratitude and a distinction to the importance that the nature of these projects, with all the cultural dimension related to them, represent for the heritage and identity preservation and for the strengthening of the municipality appeal as touristic destination. At the end of its intervention, the mayor of the council invited all the presents, which completely filled the auditorium of the Pharmacies National Association, to visit Vila Velha de Ródão, its natural and cultural heritage and to know its lands and the people who feed the cultural project Lands of Gold.

The set of distinguished museum spaces, which include the Tagus Rock Art Interpretation Centre (CIART), the Olive Oil Pole Press of Enxarrique, The Smuggling Centre in Perais, The Flax and Weaving Interpretation Centre, in Foz do Cobreão and the History of a Community Museum Centre, in Fratel, have been target of an increasing demand. The awards of APOM are assigned, annually, since 1997, to museums, projects, professionals and activities developed in the museology sector.



**15 December – Awareness sessions concerning the importance of the Holly, autochthonous species used in the Christmas time**



**15 December – Awareness sessions concerning the importance of the Holly, autochthonous species used in the Christmas time.** Resulting from the developed actions during the “Week of the Autochthonous Forest”, realised in November by the Municipality of Idanha-a-Nova with the support of Naturtejo Geopark for the schools from the town of Idanha-a-Nova, this awareness sessions concerning the Holly were prepared in the schools of the municipality, namely, the School of Monsanto; BS1/KG of Zebreira, Ladoeiro, Penha Garcia; KG of Termas de Monfortinho and S. Miguel d'Acha, in a time that comes right before the Christmas Vacations. It was delivered to each student and each teacher a plant so they, at home, with their families, could grow it in a vessel. This is a species protected by law, in Portugal. The monitor of these sessions was Hugo Oliveira supported by local technicians. In this activity, took part 226 students and 14 professors.

**18 December – Seminar “PROVERE and the Low Density Territories in the Center Region” in the Raiano Cultural Centre.** In a seminar hosted by the Coordination Commission for the Center Region and by the Idanha-a-Nova Municipality were presented the general results of the Financing Program “Mais Centro”. They were also introduced more closely the 8 PROVERE of the Center Region, with highlight for the “Buy Nature – Sustainable Tourism in Classified Areas”, where Naturtejo took part, with the main goal of building the territory as an important Nature Tourism destination in National and International levels and assert the Classified Mountain Areas of the Center Region as a crucial vector for the territory competitiveness. The mayors of the Naturtejo Geopark municipalities integrating the Intermunicipal Community of Beira Baixa were present and Naturtejo Geopark was represented by Armindo Jacinto, Rafael André, Cristina Preguiça, Joana Rodrigues, Manuela Catana and Hugo Oliveira.



**19 December – Another curricular internship in Events Organization and Management comes to an end in Naturtejo.** One more student of the Technologic Specialization Course of Events Organization and Management, of the Superior Management School of Idanha-a-Nova from the Polytechnic Institute of Castelo Branco, made a curricular internship in Naturtejo Geopark. The internship of João Tavares was developed in the scope of events promotion at the Geopark and in the preparation of information material for tourist guides. João Tavares, also with formation and experience in Audio-visual and Multimedia, made a promotional video about Naturtejo Geopark that will be introduced in the international tourism fairs where this territory will attend





**20 and 21 December – Christmas Music and traditions in Oledo.** The Christmas traditions were remembered in this season at the village of Oledo. With the presence of many who came to spend the Christmas in their home villages, was recreated a living crib and circus traditions with the Theatre Company Viv'Arte. At the fair, besides the possibility of buying some local products for gifts, was taught one of the most popular pastries in the region, the "Filhó", and also the "Sonho". In the Mother Church was a Christmas concert given by the Orfeão of Castelo Branco and, stretching the spiritual and cultural horizons, was accompanied the solemn mass with Sephardic and Mozarabic music. There was yet plenty of street animation, with the "Santa's Little Home", stand-up comedy, street parades with bagpipes and drums and show cooking of Christmas sweets and delicacies. This festival closed with a Christmas spirit with tea, "Filhós" and Christmas Cake. This was a joint organization between the Municipality of Idanha-a-Nova and the Parish of Oledo, with the support of Natutejo Geopark.

**31 December to 1 January – Admedic Tours celebrates 2015 in the Geopark.** Sixteen people came with Admedic Tours to celebrate the passing of one more year in Naturtejo Geopark, which already lived 600 millions of such moments. The group made a guided tour to the romantic Episcopal Palace Garden of Castelo Branco. Was followed a visit to the ruins of the Templar Castle, passing by the Keep and the Viewpoint of S. Gens, both with magnificent views overlooking the city and the geological landscapes that surround it. On the next day, the visit continued towards Penha Garcia, to admire the traditional architecture, the community hoven, the castle of Penha Garcia and the viewpoint overlooking the River Ponsul Valley, with a Tasting of regional products (cheese, sausages and wine), during the visit to the Cafe DOM GARCIA. Afterwards, was followed the visit to the Historical Village of Idanha-a-Velha (the ancient Roman Municipality of Civitas Igaeditanorum), Trough a calm stroll on foot passing by the ancient Cathedral, the Olive Oil Pole Press, the Epigraphic Archive, the bridge, the Templar Tower and the Wall.



# IMPACT OF GEOPARK IN MEDIA

## Newspapers & www

- December (Oleiros Magazine) – German Operators visit Orvalho
- December (Oleiros Magazine) – Spanish Group visit Oleiros
- December (Oleiros Magazine) – Parish establish the Strategic Plan
- December (Oleiros Magazine) – Ultra running in Oleiros
- December (Raiano) – Week of the Autochthonous Forest
- 17 December (Gazeta do Interior) – Oledo has plenty of animation with Christmas music and traditions
- 18 December (Diário de Leiria) – Special Provere
- 18 December (Diário de Leiria) – Provere invested 100,7 millions in the Center Region
- 18 December (Diário de Coimbra) – Special Provere
- 18 December (Diário de Viseu) – Special Provere
- 23 December (Reconquista) – Provere – Strategy until 2020 introduced in Idanha-a-Velha
- 23 December (Povo da Beira) – Christmas came earlier to Oledo
- 30 December (Povo da Beira) – Return of the Lynx to the Malcata Mountain
- 30 December (Povo da Beira) – Ana Abrunhosa guarantees continuity of the Provere
- 31 December (Gazeta do Interior) – Out of Place ends with positive review
- 31 December (Gazeta do Interior) – Oledo shows Christmas music and traditions
- 31 December (Reconquista) – Appalachian Trail opens in March

# SCIENTIFIC CONTRIBUTIONS FOR THE GEOPARK AND THE GEOSCIENCES



- Neto de Carvalho, C., Rodrigues, J. & Baucon, A. – “Fossil Art”: the importance and value of the palaeobiodiversity in the Naturtejo Global Geopark, under UNESCO (Portugal). *Comunicações Geológicas*, 101 (1), 91-99.

- Cupeto, C.A., Figueiredo, M.J., Silva, V., Santos, S., Figueiredo, M.A., Carvalho, C.N. & Preguiça, C. – Empreendedorismo no turismo de experiência e emoção. In: Dorrego, P.F., Almeida, M.R., Negas, M.C., Rodrigues, C., Rodrigues, H.S. & Fernández-Jardón, C.M. (eds.), CIAM2014 - Actas de la 4ª Conferencia Iberica de Emprendimiento, Universidade de Vigo/Empreend, Pontevedra, 23 a 26 de Octubre: 161-163.





## PROMOTION FOR THE GENERAL PUBLIC

- Conceição, A.J. – GeoMorfologia da Gardunha. Grupo de Estudos da Gardunha, 153pp. (book in Portuguese)
- Center Regional Coordination and Development Commission (2014) - PROVERE na região Centro – territórios que contam, pessoas que valem. 80 pp. (book in Portuguese)
- Gardunha Trails (brochures of the hiking trails in Portuguese and English). Gardunha 21.
- Gardunha Mountain – MTB Centre (Brochure of the MTB trails in Portuguese and English). Gardunha 21.
- Sítios e Territórios UNESCO– Diferentes Patrimónios, os mesmos Valores. Comissão Nacional da UNESCO (Brochure in Portuguese).
- Turismo Centro de Portugal - Acontece no Centro de Portugal/What's on Centro de Portugal (bilingual brochure of activities in the region)
- CATANA M. M. – Semana da Floresta Autóctone. Jornal Raiano. Ano XLII – N.º 455. Dezembro de 2014. 3 pp.





# PROMOTION FOR THE GENERAL PUBLIC

**2014 FORA DO LUGAR FESTIVAL INTERNACIONAL DE MÚSICA**

28 Nov. Mousseto  
29 Nov. Salviatoro de Extremo  
5 Dez. Lugar das Sanchetas  
6 Dez. Horta e Vela  
7 Dez. Idanha a Nova  
12 Dez. S. Miguel d'Ache  
13 Dez. Horta e Vela

28 Nov. João Hasselberg  
29 Nov. Emília Vilhote  
5 Dez. Quarteto Típico El Bazarillo  
6 Dez. Anabela Santos e Pedro Urdiales  
7 Dez. Valtor Vinagre e Pedro Guimarães  
12 Dez. Nina Garcia  
13 Dez. Dinorste Campos  
13 Dez. Carlos Rosa e Silva  
13 Dez. Estêvão Caldeira

28 Nov. S. Pedro de Mira e Danças  
29 Nov. Antiga Camançosa  
5 Dez. Associação Recreativa da Canga "A Raka"  
6 Dez. Antiga S. João  
7 Dez. Centro Cultural Raiano  
12 Dez. Centro de Dia  
13 Dez. Antiga S. João

Serviço Educativo  
- Natureza e Descoberta

WWW.FORADOLUGAR.PT

**INAUGURAÇÃO**  
Trilho Internacional dos Apalaches  
GR38 - GRANDE ROTA MURADAL-PANGEIA

**28 MARÇO**

AVENTURA  
REPRESENTAÇÃO S. DE TIPOCA  
MÚSICA FOLK  
CEIA LUSITANA

Inscrições até 20 de março:  
Posto de Turismo de Oleiros  
Naturtejo  
Junta de Freguesia de Estreito Vila Benedito  
Junta de Freguesia da Orvalho  
Junta de Freguesia de Samadães de São Simão

**PARTICIPAÇÃO GRATUITA**

Pico do Muradal GR 38

SIA T

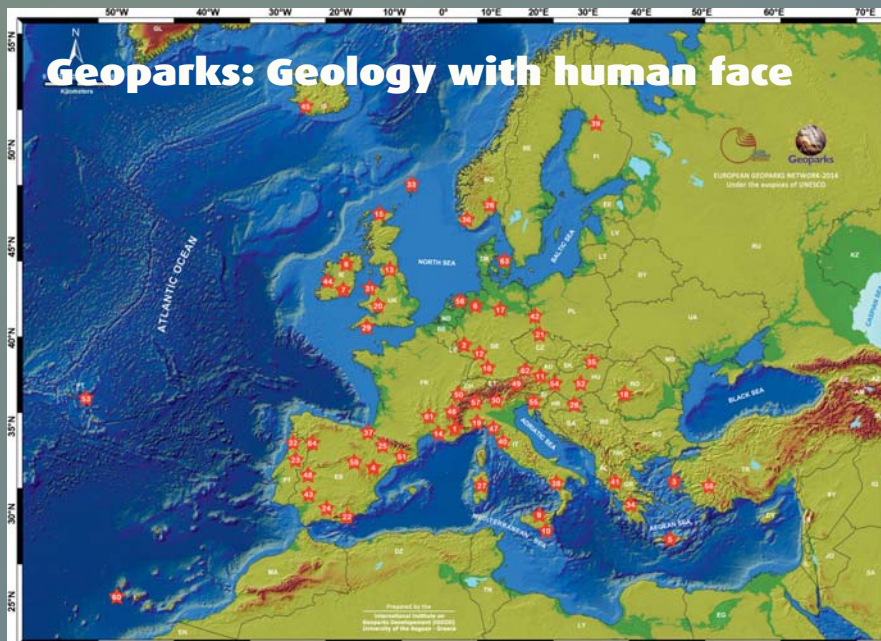
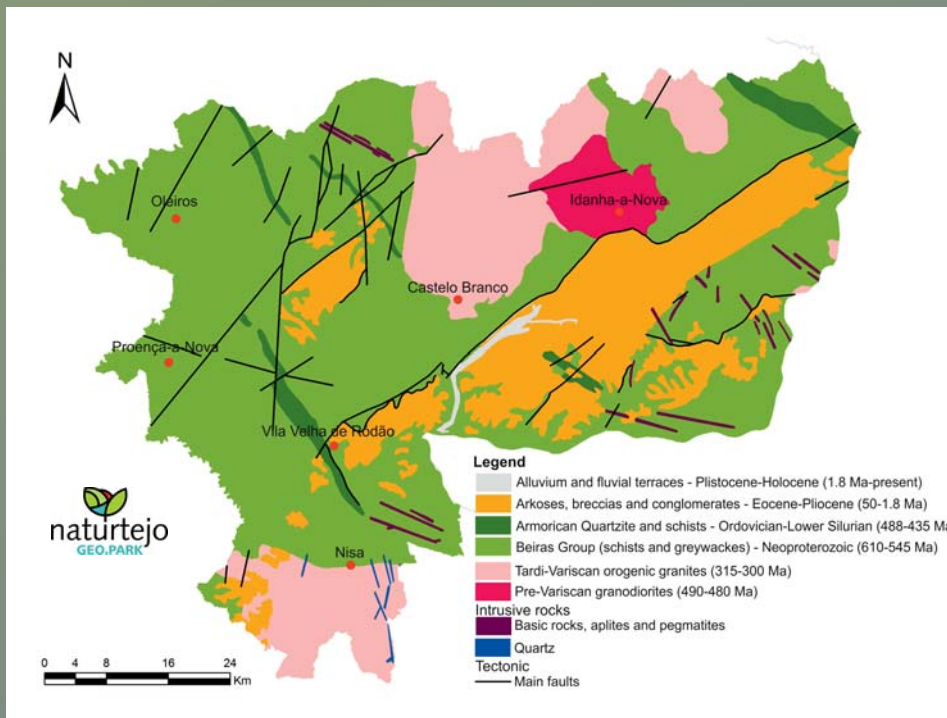
oleiros naturtejo ORVALHO

Feliz Ano Novo  
Happy New Year  
Feliz Año Nuevo

**2015**

naturtejo GEO.PARK Geoparks LOCAL GOVERNMENT NETWORK





**CRUZIANA**

GEOPARK NATURTEJO DA MESETA MERIDIONAL-EUROPEAN AND GLOBAL GEOPARK MONTHLY REPORT

[www.geoparknaturtejo.com](http://www.geoparknaturtejo.com)